



Spectrum Glass has proven to be the #1 choice of art glass for stained glass crafters worldwide. Spectrum now offers a broad line of specially formulated "Tested Compatible" glass for the hot glass artist. These products have been Expansion-Matched to a nominal C.O.E. of 96, then factory-tested for fusing compatibility. Each glass has been carefully formulated for Multi-Fire devit resistance. Though they may look the same as our stained glass products, Spectrum's "Tested Compatible" glasses are fundamentally different in their basic chemistries, designed to deliver an excellent working range and superior stability for glass fusing, slumping and other hot glass pursuits. *Yet another "Instructor Endorsed" product from Spectrum Glass!*

Priced per sq. ft. Factory Sheet 24" x 48" (Clear, Black & White) Factory Sheet 24" x 24" (All Other Colors)
Mail-Order sheets - 1 sq. ft. (12" x 12") and 0.50 sq. ft. (6" x 12")
Note: Larger sheets available - Call for packing/shipping info.

System 96 Fusible

Catalog #	Price	Description	Catalog #	Price	Description
Sys96 Fusible Cathedrals			Sys96 Fusible Opalescent		
100SFS	\$ 9.00	Clear 3mm Sys96 Fusible	1009SF	\$12.95	Black Opal Sys96 Fusible
110-2SF	\$12.95	Pale Amber Sys96 Fusible	200SF	\$12.95	White Opal Sys96 Fusible
110-8SF	\$12.95	Golden Amber Sys96 Fusible	210-72SF	\$13.95	Almond Opal Sys96 Fusible
111SF	\$12.95	Dark Amber Sys96 Fusible	211-74SF	\$17.95	Chestnut Brown Opal Sys96 Fusible
121SF	\$12.95	Light Green Sys96 Fusible	216-71SF	\$17.95	Khaki Opal Sys96 Fusible
125SF	\$12.95	Dark Green Sys96 Fusible	218-71SF	\$15.95	Stone Opal Sys96 Fusible
130-8SF	\$12.95	Pale Blue Sys96 Fusible	220-76SF	\$13.95	Dark Green Opal Sys96 Fusible
132SF	\$12.95	Light Blue Sys96 Fusible	222-72SF	\$13.95	Pastel Green Opal Sys96 Fusible
136SF	\$12.95	Dark Blue Sys96 Fusible	223-72SF	\$13.95	Easter Green Opal Sys96 Fusible
140-8SF	\$12.95	Pale Purple Sys96 Fusible	226-74SF	\$13.95	Amazon Green Opal Sys96 Fusible
142SF	\$12.95	Medium Purple Sys96 Fusible	230-72SF	\$13.95	Medium Blue Opal Sys96 Fusible
146SF	\$12.95	Dark Purple Sys96 Fusible	230-76SF	\$13.95	Dark Blue Opal Sys96 Fusible
151SF	\$17.95	Cherry Red Sys96 Fusible	233-74SF	\$13.95	Turquoise Opal Sys96 Fusible
161SF	\$17.95	Yellow Sys96 Fusible	233-75SF	\$13.95	Mariner Blue Opal Sys96 Fusible
170-2SF	\$17.95	Tangerine Sys96 Fusible	234-72SF	\$17.95	Cotton Candy Grape Sys96 Fusible
171SF	\$17.95	Orange Sys96 Fusible	238-72SF	\$13.95	Alpine Blue Sys96 Fusible
180-8SF	\$12.95	Gray Sys96 Fusible	240-72SF	\$13.95	Mauve Opal Sys96 Fusible
523-2SF	\$12.95	Teal Green Sys96 Fusible	240-74SF	\$13.95	Lilac Opal Sys96 Fusible
523-8SF	\$12.95	Hunter Green Sys96 Fusible	260-72SF	\$17.95	Yellow Opal Sys96 Fusible
526-2SF	\$12.95	Moss Green Sys96 Fusible	267-72SF	\$17.95	Sunflower Opal Sys96 Fusible
528-1SF	\$12.95	Sea Green Sys96 Fusible	290-72SF	\$19.95	Cotton Candy Pink Sys96 Fusible
528-4SF	\$12.95	Olive Green Sys96 Fusible	291-61SF	\$15.95	Flesh Opal Sys96 Fusible
532-1SF	\$12.95	Caribbean Blue Sys96 Fusible	Sys96 Opal Art Fusible		
533-1SF	\$12.95	Sky Blue Sys96 Fusible	233.54OA	\$17.95	Cascadia - Aqua on Alpine
533-3SF	\$12.95	Deep Aqua Sys96 Fusible	244.54OA	\$17.95	Orchid - Purple on Mauve
534-2SF	\$12.95	Violet Sys96 Fusible	325.52OA	\$17.95	Sour Apple - Moss on White
538-4SF	\$12.95	Steel Blue Sys96 Fusible	335.50OA	\$17.95	Nautica - Blue on White
538-6SF	\$12.95	Navy Blue Sys96 Fusible	623.52A	\$17.95	Lagoon - Moss on Aqua
543-2SF	\$12.95	Grape Sys96 Fusible	634.52OA	\$17.95	Blackberry Cream - Aqua on Navy
591-1SF	\$14.95	Champagne Sys96 Fusible	675.50A	\$17.95	Godiva - Orange & Red on White
Sys96 Uroborus Fusible Opal			Sys96 Spirit Fusible		
602502	\$29.95	Red Opal Sys96 Fusible	4001SF	\$21.95	Murano - Ivory & Black on Clear
602702	\$29.95	Orange Opal Sys96 Fusible	431-76SF	\$21.95	Vienna - Ivory & Cobalt on Clear
60355	\$29.95	Marigold Opal Sys96 Fusible	4361-76SF	\$21.95	Atlantis - Ivory, Yellow & Blue
Aventurine Fusible			4561SF	\$21.95	Rio - Ivory, Yellow & Red
128AVSF	\$19.95	Aventurine Green	4941SF	\$23.95	Valhalla - Ivory, Pink & Concord
138AVSF	\$24.95	Aventurine Blue	623-76SF	\$19.95	Seattle - Green & Cobalt on White
1009AVSF	\$24.95	Aventurine Black	6115-7SF	\$19.95	Sedona - Amber & Red on White
			635-7SF	\$19.95	Philly - Blue & Red on White
			6356-7SF	\$19.95	New Orleans - Blue, Yellow & Red
			694-7SF	\$21.95	Geneva - Pink & Concord



We carry a large selection of System 96 frits and powders. All frit & powder is made with the same exacting standards as the rest of the Sys96 line and is compatible with all Sys96 sheet glass. When ordering powder please quote prefix (F1-); when ordering frit please quote prefix (F3-). Priced per 8.5 oz jar.



Are 8.5 oz jars more than you need? If so, we have small quantities available. We offer limited colors of F3-Frit for \$1.95 and F1-Powder for \$2.50 in 1 oz bags. Please call for details.

<i>Catalog #</i>	<i>Description</i>	<i>Powder (F1-)</i>	<i>Frit (F3-)</i>	<i>Catalog #</i>	<i>Description</i>	<i>Powder (F1-)</i>	<i>Frit (F3-)</i>
00-96	Clear	\$15.95	\$12.95	2404-96	Lilac Opal	\$15.95	\$12.95
00-96IR	Clear Iridized	N/A	\$14.95	2502-96	Red Opal	\$15.95	\$12.95
015-96	Urobium Pink	\$24.95	\$19.95	2602-96	Yellow Opal	\$15.95	\$12.95
103-96	Turns Pink	\$24.95	\$19.95	2702-96	Orange Opal	\$15.95	\$12.95
1102-96	Pale Amber	\$15.95	\$12.95	2902-96	Cotton Candy Pink	\$19.95	\$15.95
1108-96	Medium Amber	\$15.95	\$12.95	2911-96	Champagne Opal	\$15.95	\$12.95
111-96	Dark Amber	\$15.95	\$12.95	355-96	Marigold Opal	\$15.95	\$12.95
121-96	Light Green	\$15.95	\$12.95	404-96	Sapphire	\$15.95	\$12.95
125-96	Dark Green	\$15.95	\$12.95	476-96	Neon Orchid	\$19.95	\$15.95
1308-96	Pale Blue	\$15.95	\$12.95	5181-96	Bronze	\$15.95	\$12.95
132-96	Light Blue	\$15.95	\$12.95	5232-96	Teal Green	\$15.95	\$12.95
136-96	Dark Blue	\$15.95	\$12.95	5238-96	Hunter Green	\$15.95	\$12.95
1408-96	Pale Purple	\$15.95	\$12.95	5262-96	Moss Green	\$15.95	\$12.95
142-96	Light Purple	\$15.95	\$12.95	5281-96	Sea Green	\$15.95	\$12.95
146-96	Deep Purple	\$15.95	\$12.95	5284-96	Olive	\$15.95	\$12.95
151-96	Cherry Red	\$15.95	\$12.95	5331-96	Sky Blue	\$15.95	\$12.95
161-96	Yellow	\$15.95	\$12.95	5333-96	Deep Aqua	\$15.95	\$12.95
171-96	Light Orange	\$15.95	\$12.95	5342-96	Violet	\$15.95	\$12.95
1808-96	Pale Gray	\$15.95	\$12.95	5384-96	Steel Blue	\$15.95	\$12.95
200-96	White Opal	\$15.95	\$12.95	5386-96	Navy Blue	\$15.95	\$12.95
2107-96	Almond Opal	\$15.95	\$12.95	5432-96	Grape	\$15.95	\$12.95
2206-96	Dark Green Opal	\$15.95	\$12.95	56-96	Black	\$15.95	\$12.95
2222-96	Pastel Green Opal	\$15.95	\$12.95	5911-96	Pink Champagne	\$15.95	\$12.95
2232-96	Turquoise Green Opal	\$15.95	\$12.95	707-96	Citron	\$15.95	\$12.95
2264-96	Amazon Green Opal	\$15.95	\$12.95	2302-96	Medium Blue Opal	\$15.95	\$12.95
2306-96	Cobalt Blue Opal	\$15.95	\$12.95	2334-96	Turquoise Blue Opal	\$15.95	\$12.95
2342-96	Cotton Candy Grape	\$19.95	\$15.95	2382-96	Alpine Blue Opal	\$15.95	\$12.95
2402-96	Mauve Opal	\$15.95	\$12.95				

Sys96 Clear Dichroic Scrap (1/4 lb.)
#619041 \$36.95

Sys96 Black Dichroic Scrap (1/4 lb.)
#619042 \$36.95

Sys96 Dichroic Scrap comes in clear and black and provides the artist with a variety of colors, textures and patterns to play with. It's the perfect accompaniment for the fused glass jeweler!



Sys96 Dichroic Squares #DIC-2X2 \$10.95
We stock dozens of different colors, patterns and textures in Sys96 dichroic glass in both clear and black. 2" x 2". Our stock varies - please call for details.

Dichro-Slides #619900 \$6.95
Use these innovative dichroic coated "slides" with any COE glass. Talk about creative versatility! Our stock varies - please call for details.

Did You Know ... ?

"Dichroic" is defined as the property of having more than one color, especially when viewed from different angles. Dichroic glass is a high-tech spin-off of the space industry. Thin layers of metallic oxides, such as titanium, silicon, and magnesium are deposited upon the surface of the glass in a high temperature, vacuum furnace.

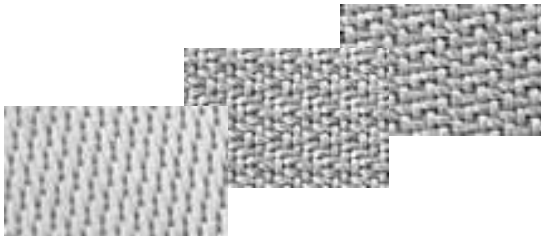
Mica Powder - Super Sparkle (1/4 oz.)	#619811	\$2.95
Mica Powder - Inca Gold (1/4 oz.)	#619822	\$2.95
Mica Powder - Super Bronze (1/4 oz.)	#619833	\$2.95
Mica Powder - Bright Silver (1/4 oz.)	#619844	\$2.95
Mica Powder - Fruit Punch (1/4 oz.)	#619855	\$2.95

These interesting powders add color, sparkle and depth to your fused glass projects. Compatible with all COEs of glass, just sprinkle the Mica on the glass and fuse between two layers. For a more deliberate design, mica can be mixed with liquid stringer medium, aloe gel and water and be squeezed or "painted" on the glass.



Did You Know ... ?

As glass artists we use mica in fusing, beadmaking and lampworking. However, mica powder is also used in lipsticks, foundations, rouges, paint, candles, soaps, resin and more. What diversity!



Lava Cloth - Crow's Foot (12" x 12")	#81901-1	\$16.95
Lava Cloth - Herringbone (12" x 12")	#81902-1	\$16.95
Lava Cloth - Harness (12" x 12")	#81903-1	\$16.95

A unique woven fiber product designed to impart a texture on the glass when fired above 1400 degrees. Resists multiple firings. Sold in 12" x 12" sheets - larger sheets available; call for details.

Dura Board - 1/4" (12" x 12")	#8132-1	\$17.95
Dura Board - 1/2" (12" x 12")	#8134-1	\$24.95
Dura Board - 1" (12" x 12")	#8136-1	\$32.95

Perfect for making molds, drop out rings, shelves, dams and kiln furniture. Use with mold hardener (#4850) to create permanent, durable molds.



Thin Fire Shelf Paper (each)	#619800	\$5.95
Thin Fire Shelf Paper (10)	#619821	\$56.95

Premium Bullseye Thin-Fire kiln paper replaces the need for kiln wash on your shelves. Fires smooth.



1/32" Fiber Paper	#8125	\$4.95
1/16" Fiber Paper	#8123	\$4.95
1/8" Fiber Paper	#8124	\$8.95

Use fiber paper when you want to emboss texture and relief in your glass.

Haik Brush - 4 Reed #619153 \$6.95
These soft brushes are used to apply kiln wash and over glazes cleanly and evenly.



Floral Slumping Vase - Large
#600720 \$24.95
Floral Slumping Vase - Small
#600721 \$19.95

A durable stainless steel form is used to create fantastic "floral" vases and candle cups.



Over Glazes

Devitrification is a fact of life when fusing. Some types of glass lose their gloss easier than others; but almost every glass crystallizes (devitrifies) when exposed to high temperatures for an extended time. Atlantic Stained Glass is proud to offer the Fusemaster line of overglazes which offer several alternatives to eliminate this problem. Each spray is designed for specific temperature range.

Spray "A" (8 oz.) #614824 \$34.95
Super Spray (8 oz.) #614827 \$46.95

Super Spray is a very low-lead (99.98% free) overglaze that prevents devitrification on kiln fired glass projects that is proven safe for food bearing surfaces. Super Spray will not discolor reds, oranges or other sensitive tones. For easy application, simply brush it onto your glass project with a soft brush or spray it on with a spray bottle. Matures at 1350°F.

Fusemaster Bending Glaze (4 oz.) #4847 \$23.95

Bending glaze is an overglaze that's easily brushed or sprayed directly onto the surface or ground edges of a piece of glass to prevent devitrification during the slumping cycle. Ideal for single layer bending such as bent lamp panels. NOT safe for use on food-bearing surfaces. Matures at 1100°F.

Fusemaster Back Magic (4 oz.) #48471 \$23.95

Spray or brush on this overglaze to add shine to the backside of your fused or bent project. Since it matures at a temperature well below slumping temperatures the shape of the project will not be distorted. Please note, that this product will not eliminate textures imprinted by shelves or kiln paper but it will make most surfaces smoother with a slight gloss. NOT recommended for food-bearing surfaces. Matures at 975°F.

Fiber Mold Hardener #4850 \$21.95

Soak ceramic fiber products in this hardener to give them rigidity. Fiber mold hardener can be used with fiber paper, fiber board and fiber blanket. Once applied fire to 1200°F in a vented area and kiln to burn out the binder and to cure the mold. The resulting durable fiber forms can be used for bending molds, support walls, kiln furniture or other high temperature forms. Perfect for making drop-out rings.



The FuseMaster family of fine overglaze products.

Glues & Fusing Accessories



Pate de Verre & Fusers Glue (4 oz.) #48752 \$7.95

This slow setting, clean burning glue will hold frit or pieces of glass in place until a heat bond can be established. Use for frit casting vertical walls without an interior mold or to hold glass pieces in place.

Fireworks Kiln Wash (1 lb.) #600737 \$9.95

A must for every fuser. Coat your shelves, and molds with kiln wash to prevent the glass from sticking.



E-6000 Adhesive #5219 \$8.95

E-6000 is a unique adhesive formulated to meet high-performance requirements. Adhering to more surfaces than virtually any other adhesive, E-6000 has exceptional adhesion to wood, metal, glass, fiberglass, ceramics and concrete. Perfect for gluing bails to the glass.



Photo Fusing Paper #499011 \$4.95

Easily turns any picture or scanned drawing into a work of fused glass art. Convert your most precious memories into images that permanently fire to a classic sepia tone which is preserved in glass forever.

High Temperature Fusing Wire (21 AWG) #619462 \$12.95

High temperature Ni-Chrome wire used to fashion hangers, etc. in kiln fired glass.

